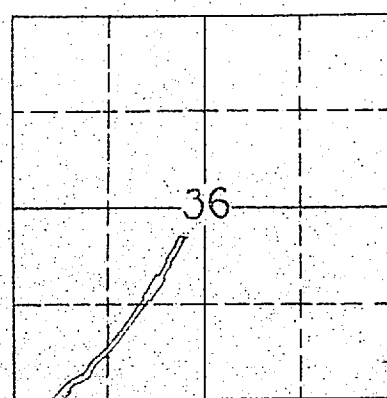
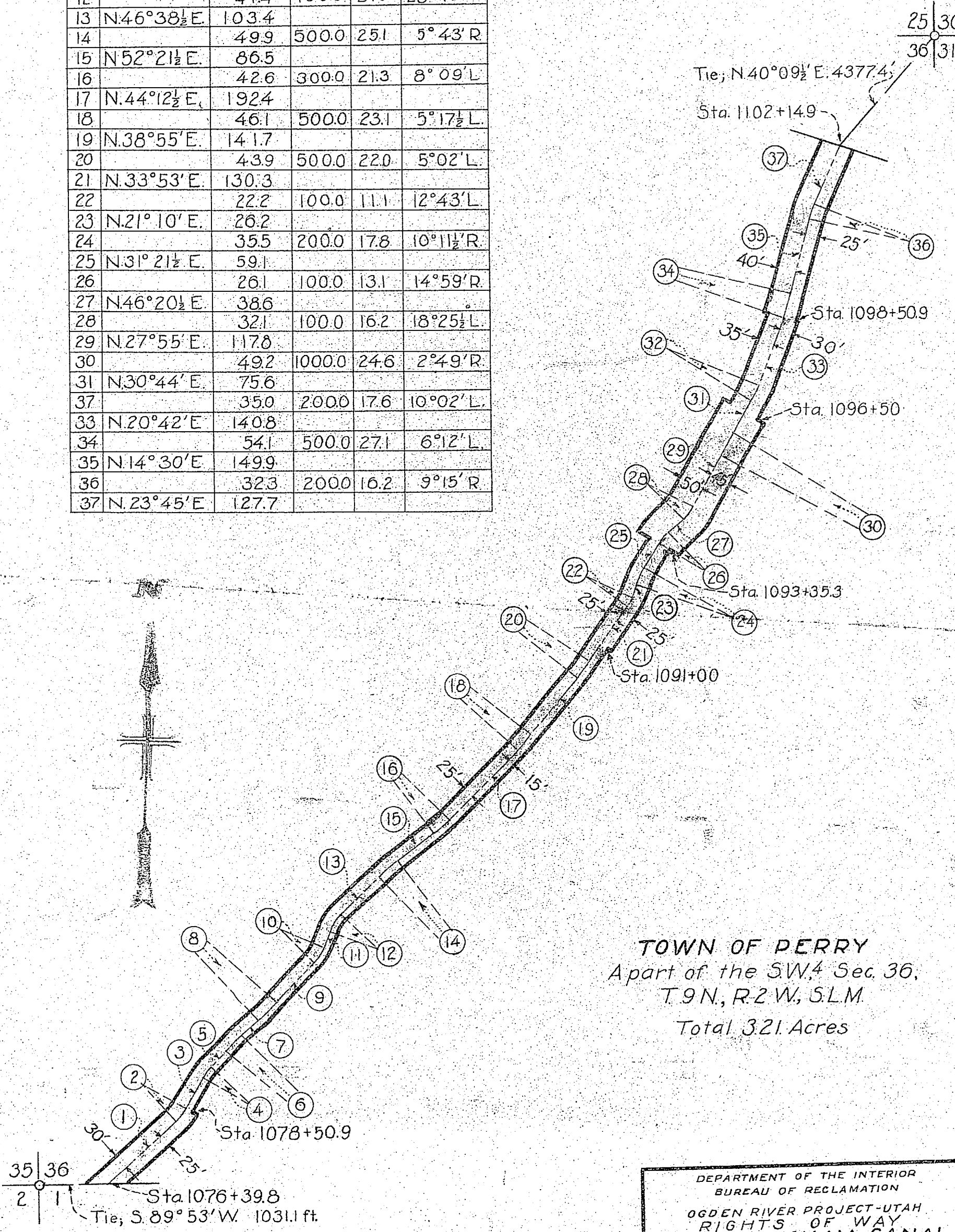


NO	COURSE	LENGTH	RAD.	TAN.	Δ R _{OR} L.
1	N.46°59½'E.	179.5			
2		31.6	100.0	15.9	18°06'L.
3	N.28°53½'E.	70.4			
4		25.3	100.0	12.7	14°31½'R.
5	N.43°25'E.	34.8			
6		46.4	500.0	23.2	5°19'R.
7	N.48°44'E.	56.2			
8		52.3	500.0	26.2	5°59½'L.
9	N.42°44½'E.	108.8			
10		34.6	100.0	17.5	19°51'L.
11	N.22°53½'E.	34.8			
12		41.4	100.0	21.0	23°45'R.
13	N.46°38½'E.	103.4			
14		49.9	500.0	25.1	5°43'R.
15	N.52°21½'E.	86.5			
16		42.6	300.0	21.3	8°09'L.
17	N.44°12½'E.	192.4			
18		46.1	500.0	23.1	5°17½'L.
19	N.38°55'E.	141.7			
20		43.9	500.0	22.0	5°02'L.
21	N.33°53'E.	130.3			
22		22.2	100.0	11.1	12°43'L.
23	N.21°10'E.	26.2			
24		35.5	200.0	17.8	10°11½'R.
25	N.31°21½'E.	59.1			
26		26.1	100.0	13.1	14°59'R.
27	N.46°20½'E.	38.6			
28		32.1	100.0	16.2	18°25½'L.
29	N.27°55'E.	117.8			
30		49.2	1000.0	24.6	2°49'R.
31	N.30°44'E.	75.6			
37		35.0	2000	17.6	10°02'L.
33	N.20°42'E.	140.8			
34		54.1	500.0	27.1	6°12'L.
35	N.14°30'E.	149.9			
36		32.3	2000	16.2	9°15'R.
37	N.23°45'E.	127.7			



KEY MAP



TOWN OF PERRY
 A part of the SW¼ Sec. 36,
 T.9N., R.2W., SLM.
 Total 3.21 Acres

DEPARTMENT OF THE INTERIOR BUREAU OF RECLAMATION	
OGDEN RIVER PROJECT-UTAH RIGHTS OF WAY OGDEN-BRIGHAM CANAL	
DRAWN: C.M.A.	SUBMITTED: _____
TRACED: K.C.A.	RECOMMENDED: _____
CHECKED: C.T.S.	APPROVED: _____
41-D-197 Ogden, Ut. 3-22-35	

Scale 1 in = 200 ft.